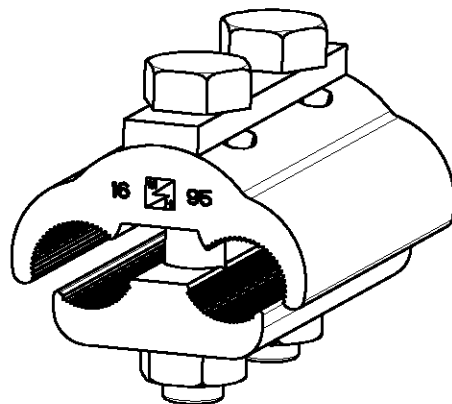
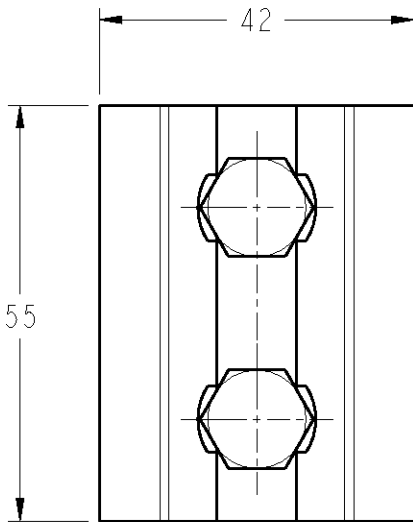
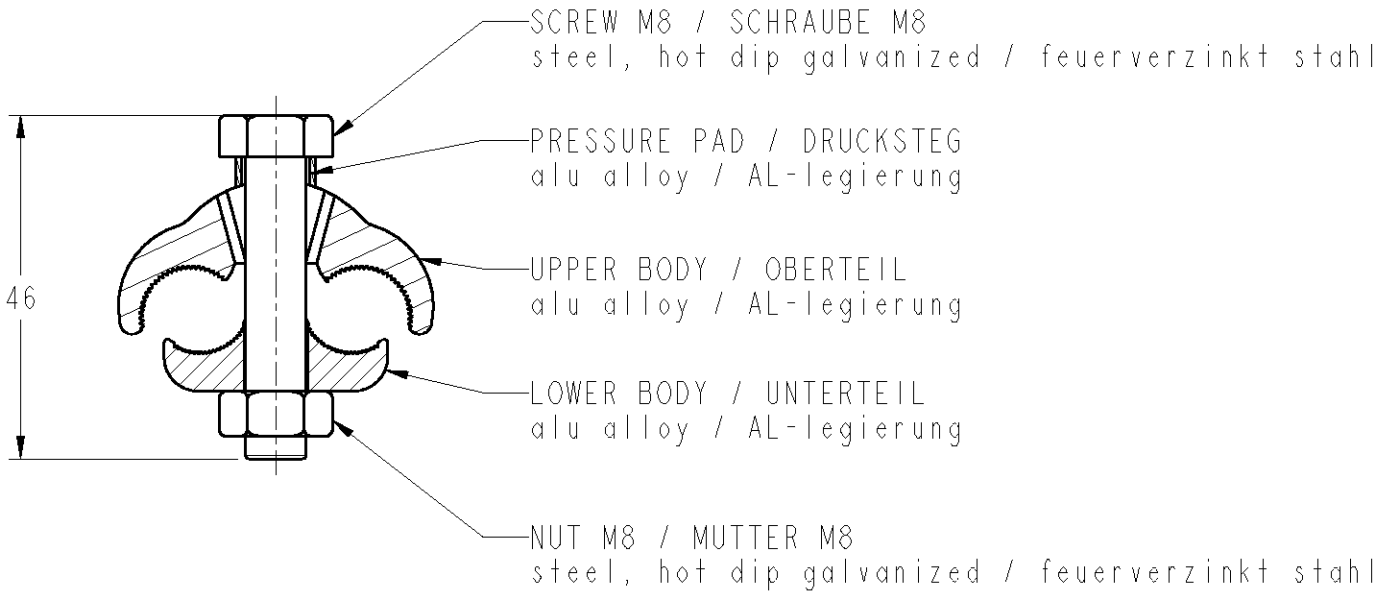


LOC	DIST	REVISIONS				
P	LTR REV	DESCRIPTION MODIFICATIONS	DATE	DWN DESS.	APVD APP.	
FH	2	1	CREATION	21MAR2007	FB	AG



Capacity / Klemmbereich : AL/ST 16/2.5-70/12 mm²
 AL 16-95 mm²
 Tightening torque / Anzugsmoment : 22 N.m

THIS DRAWING IS UNPUBLISHED. / DIFFUSION RESTREINTE. / BY TYCO ELECTRONICS CORPORATION. ALL RIGHTS RESERVED. / TOUS DROITS RESERVES. / COPYRIGHT 20

DIMENSIONS: mm TOLERANCES UNLESS OTHERWISE SPECIFIED / TOLERANCES NON SPECIFIEES (SUIV. NB DE DECIMALES): 0 PLC / DEC: ±0 1 PLC / DEC: ±0.1 2 PLC / DEC: ±0.2 3 PLC / DEC: ±0.3 4 PLC / DEC: ±0.4 ANGLES ±	DWN/DESSINE F. BOARD 21MAR2007 CHK/VERIFIE G. NEDELLEC APVD/APPROUVE A. GUICHARD PRODUCT SPEC SPEC. PRODUIT - APPLICATION SPEC SPEC. APPLICATION -	MATERIAL MATIERE - FINISH FINITION -	TOLERANCES UNLESS OTHERWISE SPECIFIED / TOLERANCES NON SPECIFIEES: - FINISH FINITION -
	Tyco Electronics SIMEL PRODUCTS NAME TITRE HEL-3590 SIZE FORMAT A4 CAGE CODE - DRAWING NO No PLAN C=5-1199009-9 RESTRICTED TO RESERVE A -		
WEIGHT MASSE APPROX. - g CUSTOMER DRAWING / PLAN CLIENT UNIQUEMENT POUR REFERENCE SCALE ECHELLE : SHEET FEUILLE OF DE REV			