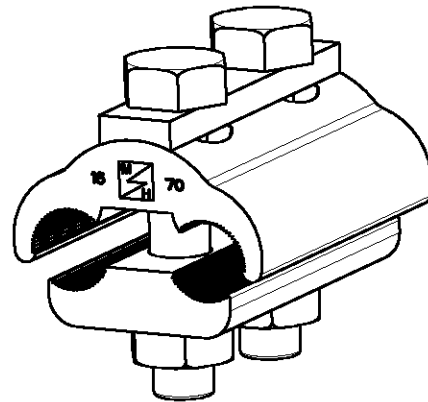
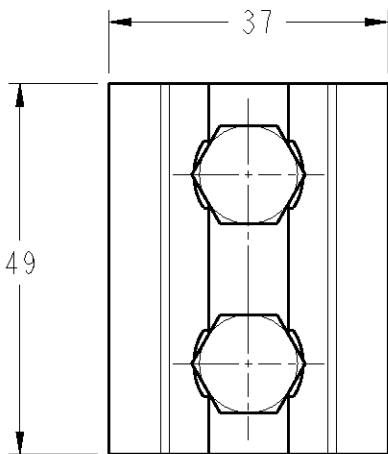
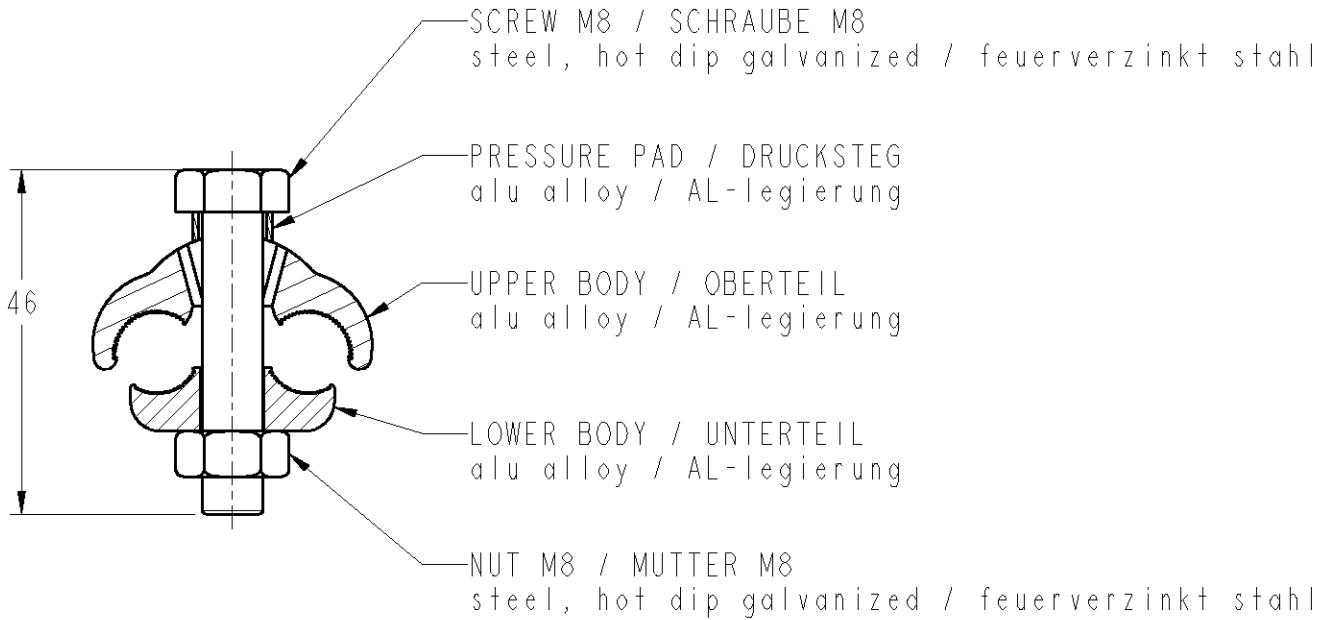


LOC	DIST	REVISIONS				
P	LTR REV	DESCRIPTION MODIFICATIONS	DATE	DWN DESS.	APVD APP.	
FH	2	1	CREATION	21MAR2007	FB	AG



Capacity / Klemmbereich : AL/ST 16/2.5-50/8 mm²
 AL 16-70 mm²
 Tightening torque / Anzugsmoment : 22 N.m

THIS DRAWING IS UNPUBLISHED. / DIFFUSION RESTREINTE. / BY TYCO ELECTRONICS CORPORATION. ALL RIGHTS RESERVED. / TOUS DROITS RESERVES. / COPYRIGHT 20

DIMENSIONS: mm		DWN/DESSINE F. BOARD 21MAR2007	MATERIAL MATIERE -	TOLERANCES UNLESS OTHERWISE SPECIFIED TOLERANCES NON SPECIFIEES: -
 TOLERANCES UNLESS OTHERWISE SPECIFIED TOLERANCES NON SPECIFIEES (SUIV. NB DE DECIMALES): 0 PLC/DEC: ±0 1 PLC/DEC: ±0.1 2 PLC/DEC: ±0.2 3 PLC/DEC: ±0.3 4 PLC/DEC: ±0.4 ANGLES ± 		CHK/VERIFIE G. NEDELLEC		FINISH FINITION -
		APVD/APPROUVE A. GUICHARD		SIMEL PRODUCTS
		PRODUCT SPEC SPEC. PRODUIT -	NAME TITRE HEL-3589	
		APPLICATION SPEC SPEC. APPLICATION -	SIZE FORMAT A4	CAGE CODE -
WEIGHT MASSE APPROX. - g		CUSTOMER DRAWING /PLAN CLIENT		
		UNIQUEMENT POUR REFERENCE	SCALE ECHELLE :	SHEET FEUILLE OF DE REV