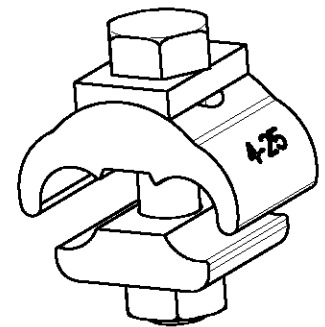
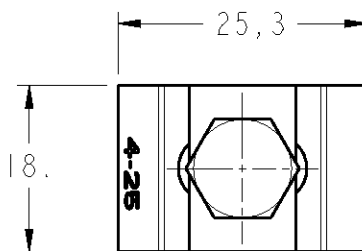
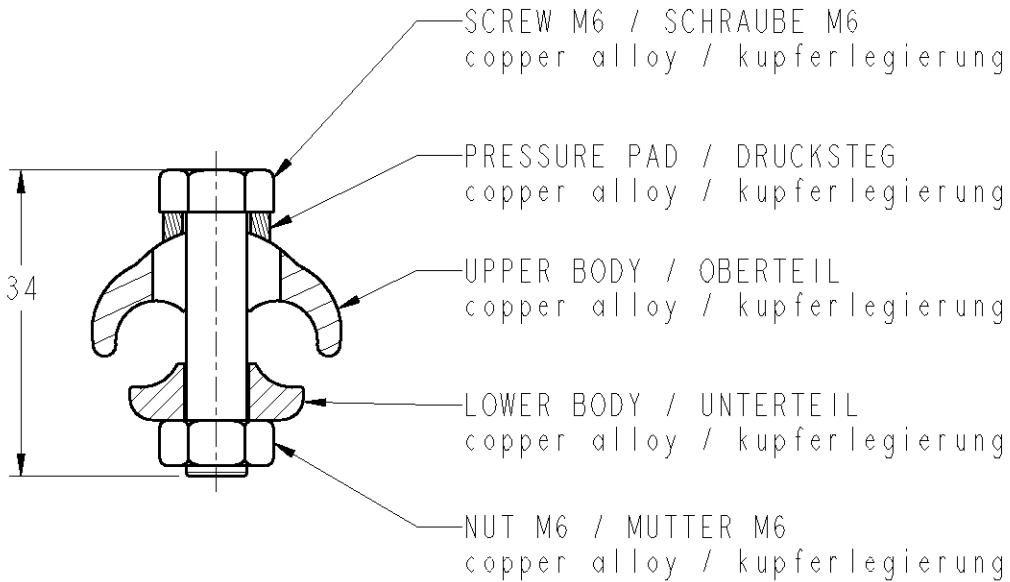


| LOC | DIST | REVISIONS | | | | |
|-----|---------|---------------------------|----------|-----------|-----------|----|
| P | LTR REV | DESCRIPTION MODIFICATIONS | DATE | DWN DESS. | APVD APP. | |
| FH | 2 | A | CREATION | 21OCT2008 | CA | AG |
| | | | | | | |
| | | | | | | |



Capacity / Klemmbereich : 4-25 mm²
 Tightening torque / Anzugsmoment : 8 N.m

20
 RELEASED FOR PUBLICATION
 LIBRE A LA DIFFUSION
 THIS DRAWING IS UNPUBLISHED.
 DIFFUSION RESTREINTE
 BY TYCO ELECTRONICS CORPORATION. ALL RIGHTS RESERVED.
 © COPYRIGHT 20 BY TYCO ELECTRONICS CORPORATION. TOUS DROITS RESERVES.

| | | | | | | | | | |
|--|--|---------------------------------------|-----------|---------------------------------|----------------------|--|----------------------------|--------------------|---|
| DIMENSIONS: mm | | DWN / DESSINE C. ANDRE | 21OCT2008 | MATERIAL MATIERE | - | TOLERANCES UNLESS OTHERWISE SPECIFIED TOLERANCES NON SPECIFIEES: | - | FINISH FINITION | - |
| TOLERANCES UNLESS OTHERWISE SPECIFIED TOLERANCES NON SPECIFIEES (SUIVANT NB DE DECIMALES): 0 PLC / DEC: ±0 1 PLC / DEC: ±0 2 PLC / DEC: ±0 3 PLC / DEC: ±0 4 PLC / DEC: ±0 ANGLES ±- | | CHK / VERIFIE G. NEDELLEC | - | Tyco Electronics SIMEL PRODUCTS | | NAME TITRE HEL-3006-M6 | | | |
| | | APVD / APPROUVE A. GUICHARD | - | | | | | | |
| | | PRODUCT SPEC SPEC. PRODUIT | - | SIZE FORMAT | CAGE CODE | DRAWING NO No PLAN | RESTRICTED TO RESERVE A | | |
| | | APPLICATION SPEC SPEC. APPLICATION | - | A4 | - | C=4-1198995-8 | - | | |
| WEIGHT MASSE APPROX. - g | | CUSTOMER DRAWING / PLAN CLIENT | | UNIQUEMENT POUR REFERENCE | SCALE ECHELLE : | SHEET FEUILLE | OF DE | REV A | |