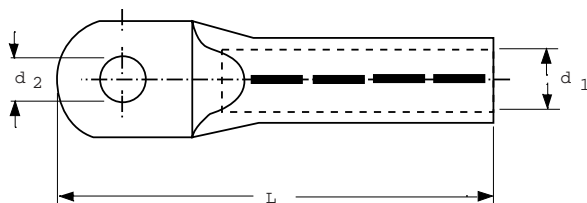


**Characteristic:**

Blank Aluminium-Lugs for circular/sector shaped conductors, longitudinally sealed.

**Material:** Al 99.5.



Mod. Code	Cross Section mm <sup>2</sup>	Bolt size	d1 (max) ø mm	d2(max) ø mm	L (max) mm	Part Number
D 31	16	M 8	5.6	8.5	50	HEL-72135-B
D 32	25	M 8	6.8	8.5	53	HEL-72136
D 33	35	M 10	8.3	10.5	62	HEL-72137-B
D 34	50	M 10	10.2	10.5	62	HEL-72138
D 35	70	M 12	11.5	13	72	HEL-72139-A
D 36	95	M 12	13.5	13	75	HEL-72140
D 37	120	M 12	15	13	80	HEL-72141
D 38	150	M 12	16.5	13	90	HEL-72142
D 39	185	M 16	18.5	17	91	HEL-72143-A
D 40	240	M 16	21.5	17	103	HEL-72144-A
D 41	300	M 16	24.5	17	103	HEL-72145
D 42	400	M 16	28	17	116	HEL-72146-B
D 43	500	M 16	31	17	122	HEL-72147
D 44	150	M 16	16.3	17	90	HEL-72142-A
D 45	625	M 20	35	21	13	EXRM 0008-625-20

**Notes:** Orders for Standard Kits including lugs and ferrules: state kit number and Mod-Code, i.e. EPKT XXXX- DXX.

Orders for lugs: state quantity and part number, i.e. 99 pcs EXRM/HEL XXXX-XX-XX.