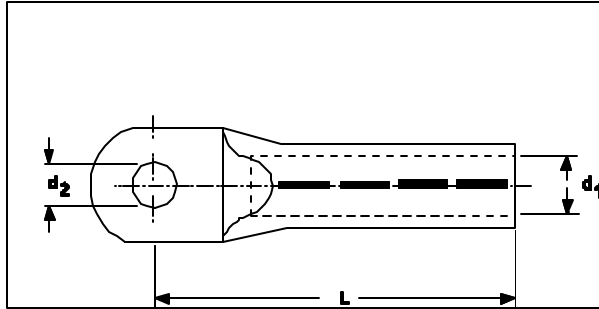


Characteristic:

Copper-Lugs for circular/sector shaped conductors, tinned.

Material: CU DIN 40500 (E-Cu).



Mod. Code	Cross Section mm ²	Bolt size	d1 (max) ø mm	d2(max) ø mm	L (max) mm	Part Number
D01	1000	M20	44,0	21,0	165,0	EXRM 0001-1000-20
D03	4	M 6		6.5		EXRM 0001- 4-6
D04	6	M 6	3.8	6.5	24	HEL-70123-A
D05	10	M 6	4.5	6.5	27.5	HEL-70124
D06	16	M 8	5.5	8.4	37	HEL-70125-A
D07	25	M 8	7	8.4	39	HEL-70126-A
D08	35	M 12	8.25	13	42	HEL-70127-B
D09	50	M 12	10	13	52	HEL-70128-B
D10	70	M 12	11.5	13	55	HEL-70129-A
D11	95	M 12	13.5	13	67	HEL-70130-A
D12	120	M 12	15.5	13	70	HEL-70131
D13	150	M 12	17	13	78	HEL-70132
D14	185	M 12	19	13	82	HEL-70133-C
D15	240	M 16	21.5	17	92	HEL-70134
D16	300	M 16	24.5	17	100	HEL-70135
D17	400	M 16	27.5	17	115	HEL-70136
D18	500	M 20	31	21	127	HEL-70137-A
D19	625	M 20	34.5	21	135	HEL-70138-A
D20	800	M 20	40	21	165	HEL-70139

Notes: Orders for Standard Kits including lugs and ferrules: state kit number and Mod. Code, i.e. XXXX-DXX.

Orders for lugs: state quantity and part number, i.e. 99 pcs EXRM/HEL XXXX-XX-XX.