

Introducing Compression Sleeves Aluminium alloy and copper type J..L & J..U

These compression sleeves are used to link two parts of bare overhead lines made of

- o **Aluminium alloy** with J..L sleeves
- o **Copper** with J..U sleeves

DESCRIPTION

- . These compression sleeves are made of
 - ⇒ One aluminium or copper tube having cable stops in the middle
 - ⇒ Netoxal compound in these tubes
- . In order to allow easy crimping, every 6.5cm a mark gives the place where crimping has to be done on the tube
- . These sleeves hold the full tension of the cables

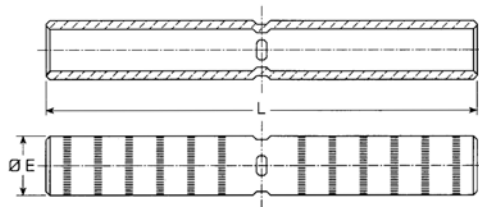
KEY FEATURES and BENEFITS

Homogeneity of material ⇒ Aluminium alloy tube on aluminium alloy wires	Long term life with conductor Full tension is warranted
Copper tube on copper wires Inhibitor compound in the tubes	Improve mechanical and electrical behaviour

STANDARDS AND SPECIFICATIONS

- Meet NF C 66 800 French standard
- Comply with the EDF specification

PRODUCT DIMENSIONS



While TE Connectivity (TE) has made every reasonable effort to ensure the accuracy of the information in this catalog, TE does not guarantee that it is error-free, nor does TE make any other representation, warranty or guarantee that the information is accurate, correct, reliable or current. TE reserves the right to make any adjustments to the information contained herein at any time without notice. TE expressly disclaims all implied warranties regarding the information contained herein, including, but not limited to, any implied warranties of merchantability or fitness for a particular purpose. The dimensions in this catalog for reference purposes only and are subject to change without notice. Specifications are subject to change without notice. Consult TE for the latest dimensions and design specifications. AMP, Raychem, SIMEL, TE Connectivity and TE Connectivity (logo) are trademarks.

Tyco Electronics Simel S.A.S. – TE Energy

1, Rue Paul Martin 21220 Gevrey-Chambertin Tel: 00 (33) 3 80 58 32 00 Fax: 00 (33) 3 80 34 10 15

Energy.te.com

SIM064Rev1 Energy PDF Feb 2012

PRODUCT DIMENSIONS

Designation	TCPN	Cross section (mm ²)	Stranding Hilos nb x Dia mm	Dia ext mm	Max Load DaN	Dia E mm	L mm	Weight (g)	Std Pack
Aluminium range									
J22(7)L	708996-1	22	7x2	6	710	11,20	146	30	12
J34(7)L	709620-1	34,4	7x2,5	7,5	1105	13,70	146	40	12
J43(7)L	709621-1	43,1	7x2,8	8,4	1390	16,00	160	-	12
MJ54HN	708997-1	54,6	7x3,15	9,45	1755	16,20	144	55	12
J75(19)L	708998-1	75,5	19x2,25	11,25	2430	20,70	234	140	6
J93(19)L	708999-1	93,3	19x2,5	12,5	3000	20,30	234	130	6
J117(19)L	709000-1	117	19x2,8	14	3765	24,00	285	210	3
J148(19)L	709001-1	148	19x3,15	15,75	4765	27,00	340	355	3
J182(37)L	710438-1	181,6	37x2,25	17,5	5845	30,00	500	-	3
J228(37)L	709002-1	228	37x2,8	19,6	7340	33,00	550	790	3
Copper range									
J7(1)U	709609-1	7,07	1x3	3	279	6,35	46	10	12
J10U	709610-1	9,9	1x3,5	3,5 to 4,2	380	8,30	82	29	12
		10,8	7x1,4		-				
		12,56	1x4		-				
J16U	709611-1	12,4	7x1,5	4,5 to 5	508	8,50	94	25	12
		14,1	7x1,6		565				
		15,9	1x4,5		565				
		19,63	1x5		700				
J18(7)U	709612-1	17,8	7x1,8	5,4	710	10,10	82	40	12
J25U	709613-1	22	7x2	6 to 6,72	880	10,10	94	35	12
		27,6	7x2,24		1075				
J28(1)U / J29(19)U	709614-1	28,25	1x6	6	1010	12,50	94	65	12
		29,3	19x1,4	7	1165				
J38(1)U / J39(1)U	709615-1	38,2	19x1,6	8	1480	12,70	94	55	12
		38,46	1x7	7	1410				
J48(19)U	709616-1	48,3	19x1,8	9	1870	14,30	94	70	12
J60(19)U	709617-1	59,7	19x2	10	2315	20,00	130	-	12
J75(19)U	709618-1	74,9	19x2,24	11,2	2820	20,00	130	245	6
J93(19)U	709619-1	93,3	19x2,5	12,5	3510	20,00	130	-	6

Crimping instructions

- 1- Mark the cable length to be inserted
- 2- Push the cable ends fully into the sleeve
- 3- Ensure the marks are in the correct position
- 4- Crimp working outwards from the center

Option

- Covered aluminium lines
- To link two parts of covered cables, some sealing rings are put at each end of the sleeves
- The reference are as follows

Designation	TCPN	Standard Packaging
MJ54G	707861-1	3
J70G	On request	3
J95G	On request	3
J148G	On request	3
J150G	On request	3
J185G	On request	3



While TE Connectivity (TE) has made every reasonable effort to ensure the accuracy of the information in this catalog, TE does not guarantee that it is error-free, nor does TE make any other representation, warranty or guarantee that the information is accurate, correct, reliable or current. TE reserves the right to make any adjustments to the information contained herein at any time without notice. TE expressly disclaims all implied warranties regarding the information contained herein, including, but not limited to, any implied warranties of merchantability or fitness for a particular purpose. The dimensions in this catalog for reference purposes only and are subject to change without notice. Specifications are subject to change without notice. Consult TE for the latest dimensions and design specifications. AMP, Raychem, SIMEL, TE Connectivity and TE Connectivity (logo) are trademarks.

Tyco Electronics Simel S.A.S. – TE Energy

1, Rue Paul Martin 21220 Gevrey-Chambertin Tel: 00 (33) 3 80 58 32 00 Fax: 00 (33) 3 80 34 10 15

Energy.te.com

SIM064Rev1 Energy PDF Feb 2012